

# TABLES OF CONTENTS

<b>INTRODUCTION .....</b>	<b>3</b>
<b>INTEGRATED FOREST MANAGEMENT OPERATIONS .....</b>	<b>4</b>
<b>Timber Harvest Operations .....</b>	<b>4</b>
Overview of Timber Harvest Operations.....	4
<b>Forest Roads Management .....</b>	<b>5</b>
Overview .....	5
Road Construction .....	5
Road Improvement .....	5
Road Access Management .....	5
Road Maintenance <sup>1</sup> .....	6
Land Surveying .....	6
<b>Young Stand Management .....</b>	<b>6</b>
Rehabilitation .....	6
Site Preparation .....	6
Planting .....	6
Vegetation Management .....	7
Tree Protection .....	7
Pre-commercial Thinning.....	7
Fertilization.....	7
Pruning.....	7
<b>Recreation Management .....</b>	<b>7</b>
Overview of Recreation Management .....	7
Facilities (Campgrounds, View Points, Trail Heads, etc.) .....	7
Trails.....	8
Management Activities.....	8

Land Exchange.....	8
Other Integrated Forest Management Operations.....	8
<b>Planning (and Information Systems).....</b>	<b>8</b>
Stand Level Inventory and Other Vegetation Inventories .....	8
Fish and Wildlife Surveys.....	8
Watershed Assessments.....	9
Research and Monitoring.....	9
Other Planning Operations .....	9
<b>Public Information and Education .....</b>	<b>9</b>
<b>Administration .....</b>	<b>10</b>
<b>Appendixes</b>	
A. Summary Tables.....	11
B. Pre-Operations Reports.....	15
C. Public Involvement.....	35

---

# KLAMATH-LAKE DISTRICT

## 2009 ANNUAL OPERATIONS PLAN

### INTRODUCTION

This document describes activities planned on the Eastern Region state forest lands during Fiscal Year 2009 (July 1, 2008 to June 30, 2009). Since the decertification of the scattered Common School Forest tracts on the Northeast and Central Oregon Districts, all the eastern region state forest lands are on the Klamath-Lake District in Klamath County. The district manages 33,739 acres of forest land, 26,912 acres of Board of Forestry lands and 6,827 acres of Common School Forest lands. Management of these lands is guided by the Eastern Region Long-Range Forest Management Plan, which was approved in October, 1995.

This Annual Operations Plan (AOP) describes how the Long-Range Plan will be implemented during the 2009 fiscal year. The AOP includes this summary document with sections on commercial forest management operations, roads and engineering, cultural resources surveys, wildlife surveys, etc. It also includes summary tables and pre-operations reports that describe the individual timber sales being proposed. The final plan will contain a public involvement summary that describes the results of the public involvement activities related to this AOP.

Keep in mind as you read the AOP summary the document describes management activities for which contracts will be prepared during the fiscal year (Commercial forest management operations and roads) as well as activities that will occur on the ground during the fiscal year (site prep, tree planting, pre-commercial thinning, fuel reduction).

Table 1. Annual Operations Plan objectives compared to annual objectives identified in the Klamath-Lake District Eastern Region Long-Range Forest Management Plan (LRFMP). All values are acres, except for Volume.

Silvicultural Activity	LRP Annual Objective		2009 AOP Objective
	Low	High	
Conifer Partial Cut	N/A	1,081	1,066
Conifer Clearcut			
Hardwood Partial Cut			
Hardwood Clearcut			
Rehabilitation			
Reforestation (Initial Planting)			112
Pre-commercial Thinning			600
Fertilization			
Pruning			

## INTEGRATED FOREST MANAGEMENT OPERATIONS

### Timber Harvest Operations

#### **Overview of Timber Harvest Operations**

This plan proposes three timber harvest operations, all in Sun Pass State Forest in the North Block for a total of 1,066 acres. Slapdash is overstocked and an armellaria root disease area where the two primary objectives are stocking reduction for forest health and reduction of susceptible species and reforestation with resistant species. 232 ROW is primarily a road right away maintenance operation for 3 miles. Switcheroo is another stand that is overstocked and in need of stocking reduction for forest health as one of the primary objectives. The current harvest objective calls for 1,081 acres of harvest each year.

**Slapdash** This partial cut harvest operation contains 334 acres in the White fir and mixed conifer forest zone. The sale area contains large areas of armellaria root disease. The sale will focus on removing white fir from the root disease areas. In the other areas of the operation the silvicultural prescription will include group selection and single tree selection, generally as a thin from below favoring Ponderosa pine. The planted species will also be with less susceptible species Ponderosa and Lodgepole pine.

**232 ROW** This partial cut harvest operation contains 72 acres in the mixed conifer forest zones. The primary objectives of this sale is to provide a wildfire fuel break and to remove all road hazard trees along a three mile stretch of the high use Sun Mountain road. The prescription will achieve a healthy uneven-aged stand dominated by a mix of conifer species.

**Switcheroo** This partial cut harvest operation contains 660 acres in the mixed conifer and Ponderosa pine forest zones. 228 acres of the sale fall within a Forest Connectivity Area (FCA) as identified in the Long Range Forest Management Plan. This area will be maintained at higher stocking levels in order to have greater crown closure and grow a higher percentage of larger trees. In the other areas of the operation the silvicultural prescription will include group selection and single tree selection, generally as a thin from below favoring Ponderosa pine.

## Forest Roads Management

### Overview

Table 4. Summary of Road Management Activities. All values are in miles.

	<b>Mainline</b>	<b>Collector</b>	<b>Spur</b>
	<b>AOP</b>	<b>AOP</b>	<b>AOP</b>
Road Construction	0	0	0.5
Road Improvement	2.5	0	3.9
Road Closure/Vacation	0	0	4.1
Road Maintenance <sup>1</sup>	15.6	0	0

<sup>1</sup>This road maintenance only reflects those miles to be maintained for the operations and non-operations planned in the annual operations plan.

### Road Construction

One operation in the 2009 Operations Plan will require 0.5 miles of road construction. Construction will involve new access spurs which will be built to minimum standards.

### Road Improvement

Two operations in the 2009 Operations Plan will require 6.4 miles of road improvement. Road improvement primarily means removal of vegetation and debris, grading, and shaping an existing road surface.

### Road Access Management

On the Klamath-Lake District, road closure involves restricting access during all of the year (Section 8, Forest Road Vacating, Oregon Dept. of Forestry (ODF) Forest Roads Manual). Roads will be closed primarily by spreading root wads, slash, and other logging debris on the road surface. The District has identified roads important for the permanent transportation system. As sales are proposed, roads within the sale areas are reassessed and non-essential roads are closed as part of project work in the timber sale contract.

Approximately 4.1 miles of roads are planned for closure on the FY09 sale plan sales. Most of these roads will be re-opened temporarily at each entry, approximately every 20 years.

## **Road Maintenance<sup>1</sup>**

Road maintenance is planned on about 10.6 miles of state roads on active sales and 5 miles not associated with any commercial harvest operations will be accomplished with a service contract during the FY09. This is a broad estimate of the road maintenance that may be accomplished during the fiscal year through active commercial operations however; the exact amount can not be predicted at this time.

## **Land Surveying**

Maintenance on existing property lines in the Yainax area (east block) associated with a timber sale planned for FY10. Survey and set a corner for the ownership line that delineates the Board of Forestry and Common School Land ownership in the Sun Pass Forest (north block) for a timber sale planned for FY11. This work will occur in FY09 by department surveyors. The District will budget \$35,000 for this project.

## Young Stand Management

On the Klamath-Lake District young stand management activities occur in uneven-aged stands after a timber harvest operation (that was planned and conducted through a previous AOP).

## **Rehabilitation**

None

## **Site Preparation**

The 154 acre Anamolous timber sale will need site preparation in the spring of 2009. Evaluation of the site to determine what type of project will take place after the timber sale is completed in the summer of 2008. An excavator piling project is planned on 100 acres of the Four Corners timber sale in FY09

## **Planting**

Planting is planned on 112 acres of the Four Corners timber sale.

## **Vegetation Management**

Noxious weed treatment with herbicides for a persistent musk thistle infestation is planned on about 1,000 acres in the Yainax block. This will be a spot treatment of immature thistle seedlings and will be conducted during the growing season. A roadside herbicide treatment for St. Johnswort along the old highway 232 is planned in the Sun Pass block for FY09.

## **Tree Protection**

None

## **Pre-commercial Thinning**

In the Eastern Region, precommercial thinning (pct) of residual sub-merchantable trees following commercial operations is a tool for managing density as well as species composition, residual tree quality, wildlife cover and fuels (primarily through reduction of ladder fuels). In FY09, pct is planned on about 830 acres of completed timber sales.

## **Fertilization**

None

## **Pruning**

None

## Recreation Management

### **Overview of Recreation Management**

The primary recreation strategy in the LRFMP is to make Klamath-Lake District state forests available for informal dispersed recreation. During development of the LRFMP, it was determined that current users value this type of opportunity because surrounding agencies and private landowners are providing a full spectrum of more developed as well as more primitive recreation opportunities. There is no recreation management activities planned for FY09.

### **Facilities (Campgrounds, View Points, Trail Heads, etc.)**

The Klamath Outdoor Science School (KOSS) will continue to develop facilities at the site. (See **Public Information and Education** section)

The District will explore the possibility of issuing a use permit to the High Desert Trail Riders Back Country Horsemen for access to the Sun Pass State Forest with a sign and dirt surface

parking area. This group currently uses the Sun Pass State Forest as a staging area to do horse riding several times a year. This area would be open to public use.

## **Trails**

A one mile loop nature trail has been developed adjacent to the KOSS site with several signs to be installed in FY09. This trail will be maintained by seasonal department staff.

## **Management Activities**

None

## Land Exchange

The District has an ongoing exchange proposal with the Fremont National Forest, which has stalled for several years due to Fremont N. F. priorities. ODF has recently put a hold on exchange efforts until a reassessment of the land exchange process is conducted. This assessment has been completed. The District plans to pursue completion of the exchange.

This exchange was initially proposed by ODF in 1990. Most of the steps in the exchange process were completed in the mid to late 90's. Because there have been significant changes in ODF's exchange process since this exchange was first proposed. The district plans to start developing an updated Land Acquisition and Exchange Plan in FY09.

## Other Integrated Forest Management Operations

None

# Planning (and Information Systems)

## **Stand Level Inventory (SLI) and Other Vegetation Inventories**

District personnel will work on SLI as time and work load allows.

## **Fish and Wildlife Surveys**

Monitoring surveys for Northern Spotted Owls are conducted every 5 years on state forest lands located within the range of the owl on Klamath Lake District, consistent with the LRFMP. The last surveys were conducted in 2005 and 2006. No spotted owls were detected during these surveys. The next surveys will be conducted in 2011-2012.

Monitoring surveys for Northern Goshawk will begin in the spring of 2009.

## **Watershed Assessments**

No formal watershed assessments are planned for FY09. Independent watershed assessment work is not prescribed in the Forest Management Plan. The FMP does prescribe participation in assessments being conducted by adjacent landowners.

The District is working in conjunction with Crater Lake National Park and ODF&W to restore bull trout in Sun Creek. The ownership of the private land within the project area is in transition. The district is also budgeting \$25,000 per year to the project. The contract to conduct the feasibility study to develop alternatives to restore bull trout to lower Sun Creek and reconnect the population with the Wood River will be completed in FY09. Further consideration of the status of the Sun Creek project will be evaluated.

## **Research and Monitoring**

None

## **Other Planning Operations**

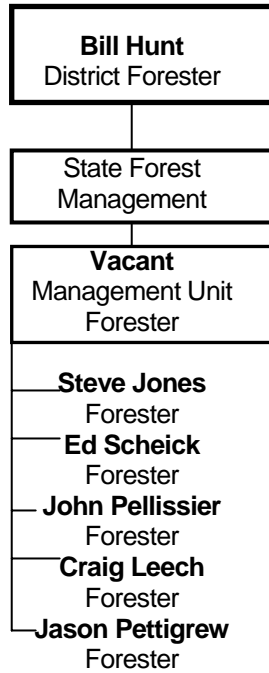
None

# Public Information and Education

The District will conduct public involvement activities related to the Annual Operations Plan. In addition to a general public comment period, the district will continue to work with the Klamath-Lake Forest Health Partnership as a focus group for the AOP process. The district will also do targeted mailings related to the AOP to people known to have an interest in the district's forest management activities.

The Klamath Outdoor Science School (KOSS) has been operating since 2006. This site is a resident outdoor science school that serves primarily grade school students, in Sun Pass State Forest. This program provides an opportunity to provide youth, teachers, and parents with education about the working forest. ODF has issued a Special Use Permit that allows KOSS to develop a site near Kimball State Park. Over 280 students, teachers, and parent chaperones attended the camps in 2008. The permit requires review and approval of annual development plans. The program will continue to have day and overnight camps and the facility plans to install electricity and water. The organization is still working on securing funds to develop the infrastructure.

# Administration



State Forests on the Klamath-Lake District are managed by the Management Unit under the direction of the District Forester. The unit is supervised by the Management Unit Forester. Three Marketing Foresters plan, prepare, and administer timber sales. A Post-Harvest Forester plans and carries out intensive management activities such as pre-commercial thinning, planting, and fuel management. This position is also responsible for forest inventory. A GIS/Land Exchange Forester manages the forest geographic information as well as the unit computers. This position also explores land exchange opportunities and carries out land exchanges.

### TIMBER HARVEST OPERATIONS - FINANCIAL SUMMARY

District: Klamath-Lake

Fiscal Year: 2009

Date: 01/07/08

Operation	Payment	Fund %		County	Sale	Net		Volum			Value		
		BOF	CSL			Partial Cut	Clear-cut	Con-ifer	Hard-woods	Total	Gross	Projects	Net
232 ROW	Recovery	100%	0%	Klamath	4th	72		0.3		0.3	\$57,600	\$20,474	\$37,126
Slapdash	Recovery	8%	92%	Klamath	4th	334		2.4		2.4	\$460,519	\$21,498	\$439,021
Switcheroo	Recovery	100%	0%	Klamath	4th	660		3.5		3.5	\$612,500	\$40,260	\$572,240

<b>Total:</b>	<b>1,066</b>	<b>0</b>	<b>6.2</b>	<b>0.0</b>	<b>6.2</b>	<b>1,130,619</b>	<b>82,232</b>	<b>1,048,387</b>
---------------	--------------	----------	------------	------------	------------	------------------	---------------	------------------

## TIMBER HARVEST OPERATIONS - FOREST STRUCTURE SUMMARY

District: Klamath

Fiscal Year 2009

Date: 1/7/08

Operation	Stand	Net Acres			Stand Structure Development Pathway			Structural Components			Comments
		Clearcut	Partial Cut	Total	Current	Post-Harvest	Desired	Down Wood	Green Trees/ ac.	Snags/ ac.	
<b>Sun Pass Block</b>											
232 ROW	N/A	0	72	72	Multi-Layer	" "	" "	N/A	N/A	N/A	right-of-way operation
Slapdash	136	0	334	334	Multi-Layer	" "	" "	<sup>1</sup> 79 piece/ac.	N/A	<sup>2</sup> 2.2>10" DBH; <sup>2</sup> .2>20" DBH	<sup>1</sup> 2003 Inv. Data; <sup>2</sup> According to LRFMP
Switcheroo	237		228	228	Multi-Layer	" "	" "	<sup>1</sup> 27 piece/ac	<sup>3</sup> 11>18"DBH; 4 >25" DBH	<sup>2</sup> 15>20"DBH; H; 5.5 > 30"DBH	<sup>1</sup> 2003 Inv. Data; <sup>2</sup> According to LRFMP for FCA's; <sup>3</sup> DFC
" "	238		365	365	Multi-Layer	" "	" "	<sup>1</sup> 21 pieces/ac	<sup>3</sup> 8>20" DBH; 2>30" DBH	<sup>2</sup> 2.2>10" DBH; <sup>2</sup> .2>20" DBH	<sup>1</sup> 2003 Inv. Data; <sup>2</sup> According to LRFMP; <sup>3</sup> DFC
" "	239		67	67	Multi-Layer	" "	" "	No Data	<sup>3</sup> 8>20" DBH; 2>30" DBH	<sup>2</sup> 2.2>10" DBH; <sup>2</sup> .2>20" DBH	<sup>2</sup> According to LRFMP; <sup>3</sup> DFC

<b>Total</b>	<b>0</b>	<b>1066</b>	<b>1066</b>
<b>Annual Range</b>			1081

### FOREST ROADS SUMMARY

District: Klamath-Lake      Fiscal Year: 2009      Date: 01/07/08

Operation	Construction		Improvement		Other Projects	Total Project Costs	Gross Value of Operation	Total Cost as a percent of Gross Value	Comments
	Miles	Cost	Miles	Cost					
232 ROW					\$20,474	\$20,474	\$57,600	35.5%	Right-of-way operation
Slapdash	0.5	880	1.3	1144	\$19,474	\$21,498	\$460,519	4.7%	
Switcheroo			5.1	15000	\$25,260	\$40,260	\$612,500	6.6%	

<b>Total:</b>	<b>\$82,232</b>	<b>\$1,130,619</b>	<b>7.3%</b>
---------------	-----------------	--------------------	-------------

**Road Projects Not Associated with Commercial Forest Management Operations**

10 & 7 Road.					\$5,000	\$5,000
--------------	--	--	--	--	---------	---------

## Reforestation and Young Stand Management Report

District: Klamath-Lake

Fiscal Year: 2009

Date:1/7/08

Management Activity	Board of Forestry			Common School Forest Lands			District	
	Acres Planned	Average Cost*/Acre	BOF Cost	Acres Planned	Average Cost*/Acre	CSL Cost	Total Acres	Total Cost
Initial Planting	112	\$163.00	\$18,256.00			\$0.00	112	\$18,256.00
Interplanting			\$0.00			\$0.00	0	\$0.00
Underplanting			\$0.00			\$0.00	0	\$0.00
Tree Protection-Barriers			\$0.00			\$0.00	0	\$0.00
Tree Protection-Direct Control			\$0.00			\$0.00	0	\$0.00
Site Prep-Chemical- Aerial			\$0.00			\$0.00	0	\$0.00
Site Prep-Chemical- Hand	154	\$150.00	\$23,100.00			\$0.00	154	\$23,100.00
Site Prep -Slash Burning			\$0.00			\$0.00	0	\$0.00
Site Prep -Mechanical	100	\$80.00	\$8,000.00			\$0.00	100	\$8,000.00
Fertilization			\$0.00			\$0.00	0	\$0.00
Noxious weeds	1,000	\$35.00	\$35,000.00			\$0.00	1,000	\$35,000.00
Release-Chemical- Aerial			\$0.00			\$0.00	0	\$0.00
Release,-Chemical-Hand			\$0.00			\$0.00	0	\$0.00
Release-Mechanical-Hand			\$0.00			\$0.00	0	\$0.00
Precommercial Thinning	830	\$80.00	\$66,400.00			\$0.00	830	\$66,400.00
Pruning			\$0.00			\$0.00	0	\$0.00
Other			\$0.00			\$0.00	0	\$0.00
<b>Totals</b>	<b>2,196</b>	<b>--</b>	<b>\$150,756.00</b>	<b>0</b>	<b>--</b>	<b>\$0.00</b>	<b>2,196</b>	<b>\$150,756.00</b>

\*Planting costs include all costs including seedlings